



Local Agency Formation Commission of Napa County
Subdivision of the State of California

1030 Seminary Street, Suite B
Napa, California 94559
Phone: (707) 259-8645
Fax: (707) 251-1053
www.napa.lafco.ca.gov

We Manage Local Government Boundaries, Evaluate Municipal Services, and Protect Agriculture

Agenda Item 6a

TO: Local Agency Formation Commission

PREPARED BY: Brendon Freeman, Executive Officer

MEETING DATE: June 6, 2016

SUBJECT: County of Napa Water Update

DISCUSSION

Representatives of the County of Napa will provide a presentation for the Commission on the status of Water Supplies and the drought following El Nino, Sustainable Groundwater Management Act (SGMA) Implementation Update, and Napa County's Comprehensive Groundwater Monitoring Program.

No actions will be taken as part of this item. The Commission is invited to discuss the information presented by the County of Napa and consider possible direction to LAFCO staff with respect to providing future updates.

SUMMARY

A summary for each of the aforementioned water-related topics is provided below.

Water Supply, Drought, and El Nino

Napa County and its cities fared well in this strong El Nino year. Local and imported water supplies at this time are more than adequate. The presentation will summarize the status of the County's municipal water supplies and thinking with respect to addressing the ongoing drought.

Groundwater Monitoring Program

Long-term, systematic monitoring programs are essential to provide data that allow for improved evaluation of water resources conditions and to facilitate effective water resources planning. For this reason, the County of Napa embarked on a countywide project referred to as the "Comprehensive Groundwater Monitoring Program, Data Review, and Policy Recommendations for Napa County's

Greg Pitts, Vice Chair
Councilmember, City of St. Helena

Juliana Inman, Commissioner
Councilmember, City of Napa

Joan Bennett, Alternate Commissioner
Councilmember, City of American Canyon

Diane Dillon, Chair
County of Napa Supervisor, 3rd District

Brad Wagenknecht, Commissioner
County of Napa Supervisor, 1st District

Keith Caldwell, Alternate Commissioner
County of Napa Supervisor, 5th District

Brian J. Kelly, Commissioner
Representative of the General Public

Gregory Rodeno, Alternate Commissioner
Representative of the General Public

Brendon Freeman
Executive Officer

Groundwater Resources” (*Comprehensive Groundwater Monitoring Program*) in 2009, to meet action items identified in the 2008 General Plan update. The program emphasizes developing a sound understanding of groundwater conditions and implementing an expanded groundwater monitoring and data management program as a foundation for future coordinated, integrated water resources planning and dissemination of water resources information.

The Napa County Groundwater Monitoring Plan 2013 (“Plan”) was prepared to formalize and augment groundwater monitoring efforts conducted as part of the Comprehensive Groundwater Monitoring Program. The Plan recommended annual reports on groundwater conditions and modifications to the countywide groundwater monitoring program as needed. Additionally, the Plan recommended a comprehensive triennial report.

The Annual Report provides an update on groundwater level conditions, monitoring program modifications, and summarizes available background information in order to serve as a common reference for future annual reports. It is available on the Napa County WICC website at: http://www.napawatersheds.org/app_pages/view/7339. The presentation from the County will provide program history and background as well as an overview of the report.

Sustainable Groundwater Management Act

The Sustainable Groundwater Management Act (SGMA) is a three-bill package that collectively creates a new structure for sustainable management of California’s groundwater basins. Governor Brown signed the SGMA on September 16, 2014 (*effective January 1, 2015*), which includes the provisions of Senate Bill (SB) 1168, Assembly Bill (AB) 1739, and SB 1319. The Act builds upon the existing groundwater management provisions established by AB 3030 (1992), SB 1938 (2002), and AB 359 (2011), as well as SBX7 6 (2009) which established the California Statewide Groundwater Elevation Monitoring (CASGEM) Program.

SGMA represents a significant change in the State’s history of water management, providing the framework and authority at the local and State level to advance groundwater management planning. A central feature of SGMA is the recognition that groundwater management in California is best accomplished locally. SGMA establishes a definition of sustainable groundwater management, provides local agencies with the ability to develop plans and implementation strategies to sustainably manage groundwater resources, prioritizes basins with the greatest need, and sets a timeline for implementation.

The presentation will provide an overview of SGMA along with an update on the implementation timeline (*see below*) and public education/outreach through the WICC.

SGMA Implementation Timeline

On January 1, 2015 the California Department of Water Resources (DWR) began implementation of the Sustainable Groundwater Management Act (Act). Under the Act's timeline for implementation (Attachment One), DWR first prioritized the groundwater basins with the greatest need. DWR determined that the current CASGEM basin prioritizations were sufficient for this purpose, which designated the Napa Valley Sub-basin (essentially the valley floor) as a medium priority basin. DWR then developed Groundwater Sustainability Agency (GSA) formation guidelines, followed by draft Emergency Regulations for Groundwater Sustainability Plans (GSP) and Alternatives. The new regulations were approved by the California Water Commission (CWC) at their May 18th meeting and become effective in June 2016.

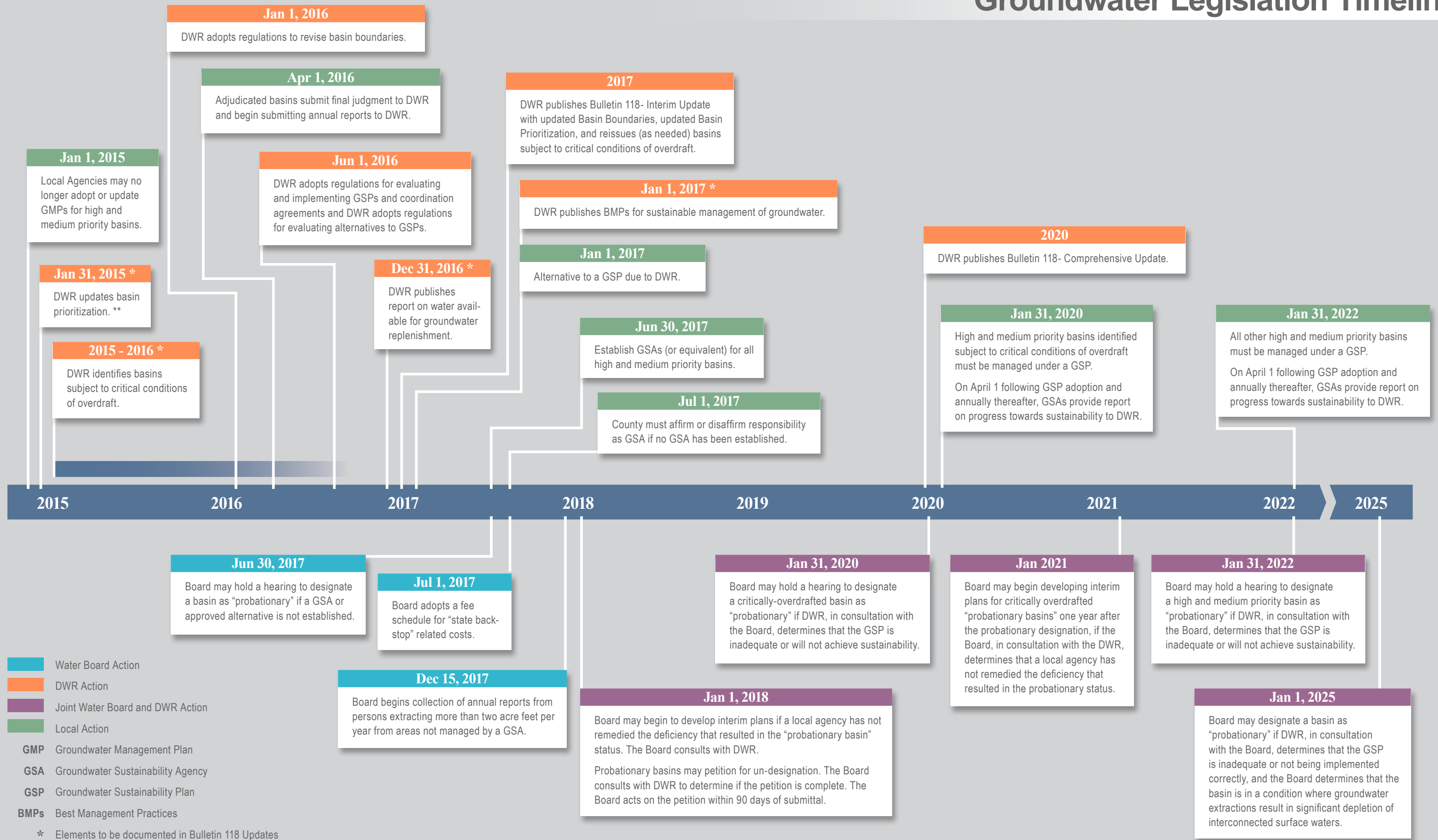
WICC Groundwater Education-Outreach Support

The County supports public education and outreach on groundwater and watersheds through the Napa County Watershed Information and Conservation Council (WICC) (website: http://www.napawatersheds.org/app_pages/view/7339). This includes on-going WICC updates and public workshops on SGMA local implementation, groundwater sustainability/monitoring program, El Nino and drought conditions, and water conservation programs. Upcoming field workshops this summer will provide interested property owners with monitoring options through easy to use sonic monitoring equipment available from the Natural Resources Conservation Division of Public Works. The County also supports watershed and groundwater education and outreach workshops through the Napa County Resource Conservation District.

ATTACHMENT

- 1) SGMA Implementation Timeline

Groundwater Legislation Timeline



- Water Board Action
- DWR Action
- Joint Water Board and DWR Action
- Local Action
- GMP** Groundwater Management Plan
- GSA** Groundwater Sustainability Agency
- GSP** Groundwater Sustainability Plan
- BMPs** Best Management Practices

* Elements to be documented in Bulletin 118 Updates
 ** Basin prioritization will be updated prior to each Bulletin 118 Update (estimated to be every 5 years)